



## CARBURETTOR Tillotson HW-48A



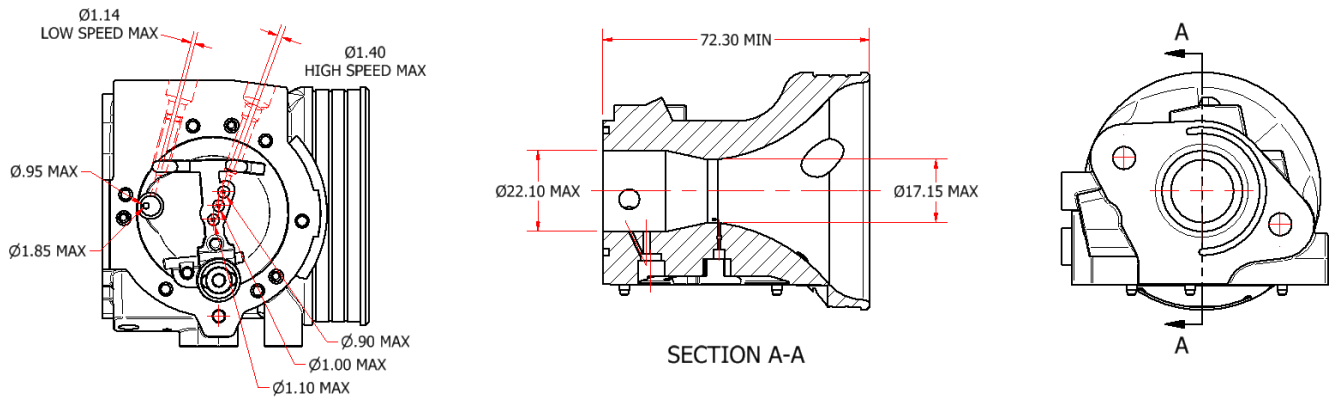
PHOTO OF ADJUSTING SIDE



PHOTO OF INLET SIDE

Manufacturer	TILLOTSON LTD.
Make	TILLOTSON
Model	HW-48A

## SECTION VIEW



## MARKING

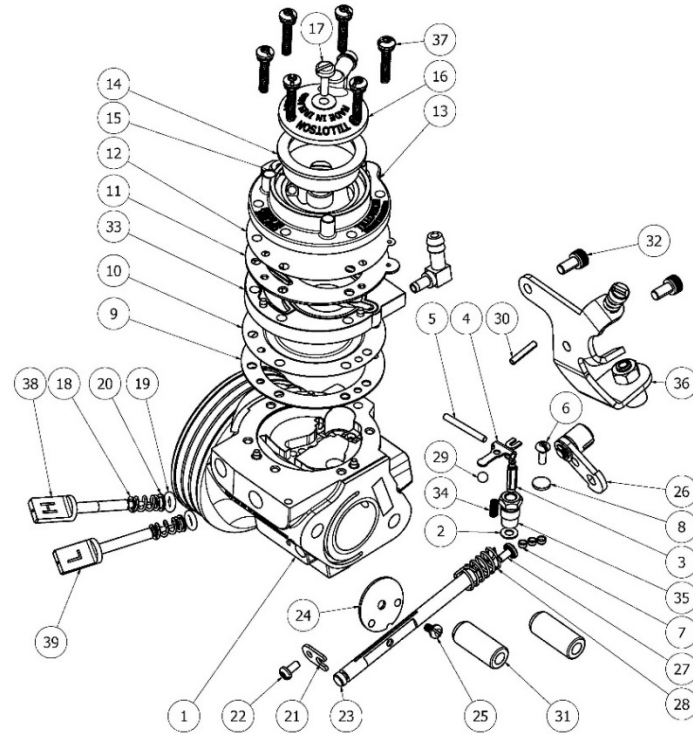


CARBURETTOR DESCRIPTION AND SKETCH OF PARTS

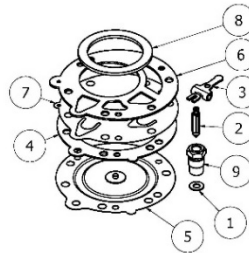
HW-48A

PARTS LIST			
ITEM	QTY	PART NUMBER	DESCRIPTION
1	1	219-D325	MACHINED BODY
2	1	16-B199	* COPPER GASKET, INLET SEAT
3	1	34-216	* INLET NEEDLE
4	1	155-A27	* INLET VALVE CONTROL LEVER
5	1	32-79	FULCRUM LEVER PIN
6	1	15-B329	FULCRUM LEVER SCREW
7	3	80-160	BRASS PLUG
8	1	179-62	WELCH PLUG
9	1	16-B217	*+ METERING GASKET
10	1	237-600	*+ DIAPHRAGM ASSEMBLY
11	1	16-B392	*+ PUMP GASKET
12	1	237-162	*+ FUEL PUMP DIAPHRAGM
13	1	141-89	FUEL PUMP BODY
14	1	16-B205	*+ STRAINER GASKET
15	1	95-170	FUEL STRAINER SCREEN
16	1	91-A251	WHITE STRAINER COVER
17	1	15-B313	COVER SCREW
18	2	24-B449	ADJUSTMENT SCREW SPRING
19	2	44-361	ADJUSTMENT SCREW O-RING
20	2	78-A256	ADJUSTMENT SCREW WASHER
21	1	29-224	THROTTLE SHAFT CLIP
22	1	15-C19	4-40 UNC SCREW
23	1	13-B215	THROTTLE SHAFT
24	1	14-A96	THROTTLE SHUTTER
25	1	15-C20	4-40 UNC SCREW
26	1	12-1218	THROTTLE LEVER ASSEMBLY
27	1	15-C52	LEVER SCREW
28	1	24-B381	THROTTLE RETURN SPRING
29	1	206-135	4MM BRASS BALL
30	1	62-A92	PIN
31	2	81-377	CARBURETTOR MOUNTING NUT
32	2	15-C67	M4 X 0.7 SOCKET CAP SCREW
33	1	91-1031	METERING COVER ASSEMBLY
34	1	24-B323	INLET TENSION SPRING 26g
35	1	36-A27	* INLET SEAT
36	1	136-559	CABLE BRACKET ASSEMBLY
37	6	15-C51	6 - 32 UNC SCREW
38	1	43-1045	M4 X 0.5 ADJUSTMENT SCREW H
39	1	43-1046	8-32 UNC ADJUSTMENT SCREW L

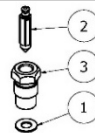
US/Canada: #34 Inlet Tension Spring is non-tech.



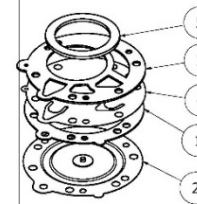
REPAIR KIT [RK-7HW] PART LIST			
ITEM	QTY	PART NUMBER	DESCRIPTION
1	1	16-B199	* COPPER GASKET, INLET SEAT
2	1	34-216	* INLET NEEDLE
3	1	155-A27	* INLET VALVE CONTROL LEVER
4	1	16-B217	*+ METERING GASKET
5	1	237-600	*+ DIAPHRAGM ASSEMBLY
6	1	16-B392	*+ PUMP GASKET
7	1	237-162	*+ FUEL PUMP DIAPHRAGM
8	1	16-B205	*+ STRAINER GASKET
9	1	36-A27	* INLET SEAT



INLET SEAT & NEEDLE ASSEMBLY PACK [233-720P] PART LIST:			
ITEM	QTY	PART NUMBER	DESCRIPTION
1	1	16-B199	* COPPER GASKET, INLET SEAT
2	1	34-216	* INLET NEEDLE
3	1	36-A27	* INLET SEAT



DIAPHRAGM AND GASKET KIT [DG-1HW] PART LIST:			
ITEM	QTY	PART NUMBER	DESCRIPTION
1	1	16-B217	*+ METERING GASKET
2	1	237-600	*+ DIAPHRAGM ASSEMBLY
3	1	16-B392	*+ PUMP GASKET
4	1	237-162	*+ FUEL PUMP DIAPHRAGM
5	1	16-B205	*+ STRAINER GASKET



PARTS OF CARBURETTOR

REF.9 - P. N°16-B217  
DIAPHRAGM GASKET



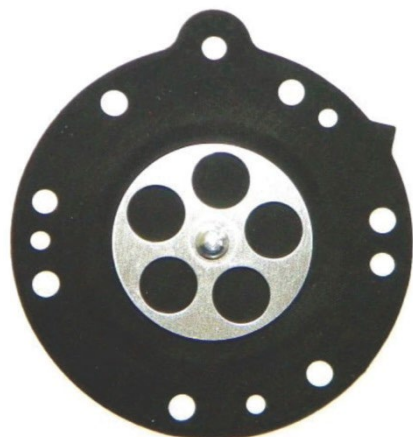
Thickness =  $0.5 \pm 0.1$  mm

PUMP DIAPHRAGM GASKET  
REF.11 - P. N° 16-B392



Thickness =  $0.8 \pm 0.1$  mm

REF.10 - P. N°237-600  
DIAPHRAGM



Thickness =  $0.13 \pm 0.07$  mm

REF.12 - P. N°237-162  
PUMP DIAPHRAGM



Thickness =  $0.10 \pm 0.063$  mm

**REF.33 - P. N° 91-1031  
DIAPHRAGM COVER**



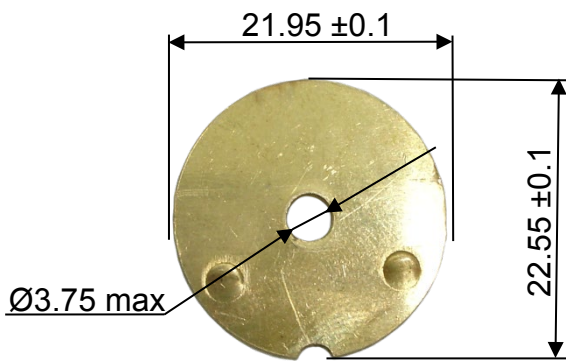
Thickness =  $6.75 \pm 0.15$  mm

**REF.13 - P. N° 141-89  
PUMP COVER**



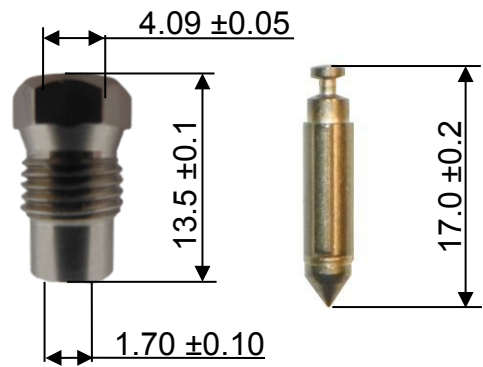
Thickness =  $12.5 \pm 0.15$  mm

**REF. 24 - P. N° 14-A96  
THROTTLE SHUTTER**



Thickness =  $0.81 \pm 0.1$  mm

**REF. 35, 3 - P. N° 233-720P  
SEAT + NEEDLE**



**REF.39 - P. N° 43-1046  
NEEDLE LOW SPEED**



**REF.38 - P. N° 43-1045  
NEEDLE HIGH SPEED**

